



SciFinder®
The choice for chemistry research.™



SCIFINDER® AND MACINTOSH OS X: INSTALLING JAVA AND ENABLING JAVA APPLETS

COPYRIGHT® 2012 AMERICAN CHEMICAL SOCIETY

ALL RIGHTS RESERVED; PRINTED IN THE USA.

Quoting or copying of material from this publication for educational purposes is encouraged, provided that CAS is acknowledged as the source of the material.

Recent updates to the Apple Macintosh operating system (OS X) introduced Java Runtime Environment (JRE) issues for many Web applications, including SciFinder®. These issues are due, in part, to JRE not being pre-installed on computers purchased with Macintosh OS X 10.7.3 (Lion) or newer. In addition:

1. Upgrading to OS X Lion or newer automatically removes Java from your computer
2. Automatic JRE updates in OS X disable the “Run Java applet” function for Web browsers and Web Start applications
3. Java applets are disabled if the Java Web plug-in detects that no applets have been run for an extended period of time (<http://support.apple.com/kb/HT5242>)

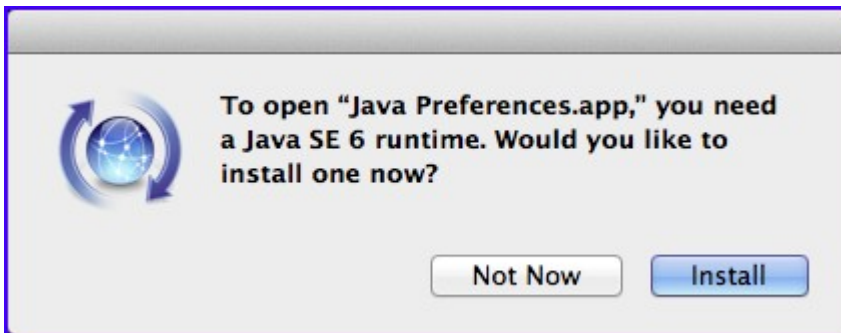
Since Java is required to use the structure drawing editor in SciFinder, installation of a compatible JRE and manual enabling of the Java applet is required.

The following instructions will show you how to install and enable JRE on your computer.

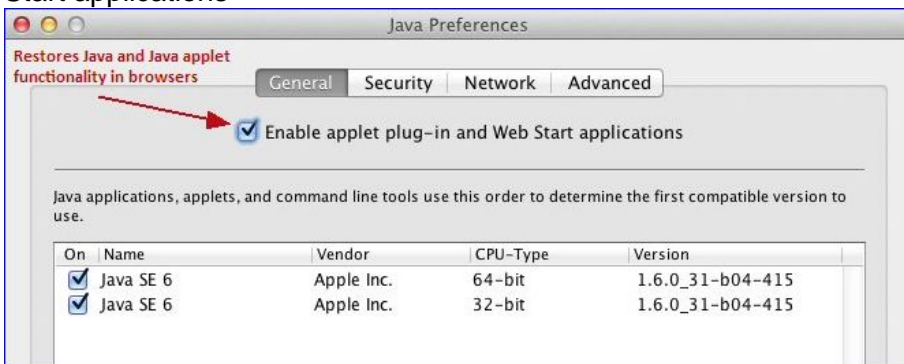
INSTALLING JRE ON MAC OS X

Method 1 — Using the OS X system utility

1. **Exit** all browsers
2. **Navigate** to Applications → Utilities → Java Preferences (java.preferences.app)
3. **Run** Java Preferences.



4. **Click** Install
5. After the JRE installation, open Java Preferences and **click the checkbox** “Enable applet plug-in and Web Start applications”



6. Open your Web browser and sign in to SciFinder



7. Click the checkbox “Allow all applets from “scifinder.cas.org” with this signature”

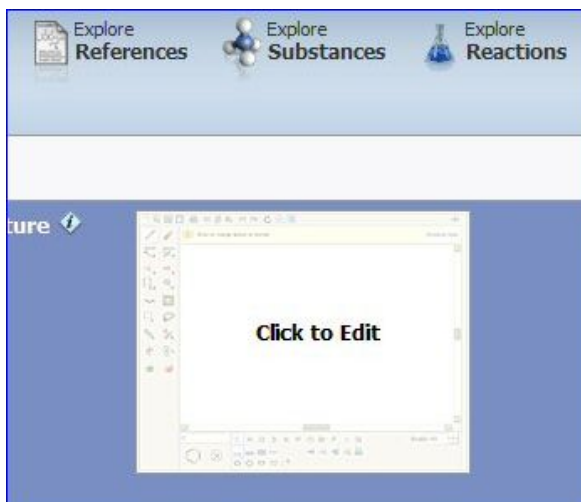
8. Click Allow

Method 2 — Manual download and installation

Download and install the latest JRE (as of this publication) from Apple Support at <http://support.apple.com/kb/DL1550>. To check for newer versions, visit <http://support.apple.com> and search “java download”.

Test Your Installation

After installing JRE and enabling Java applets, sign in to SciFinder and click Explore **Substances** or Explore **Reactions**. The structure drawing thumbnail should be visible and functional.



If you encounter problems, verify that JRE has been installed correctly by visiting one of the following sites:

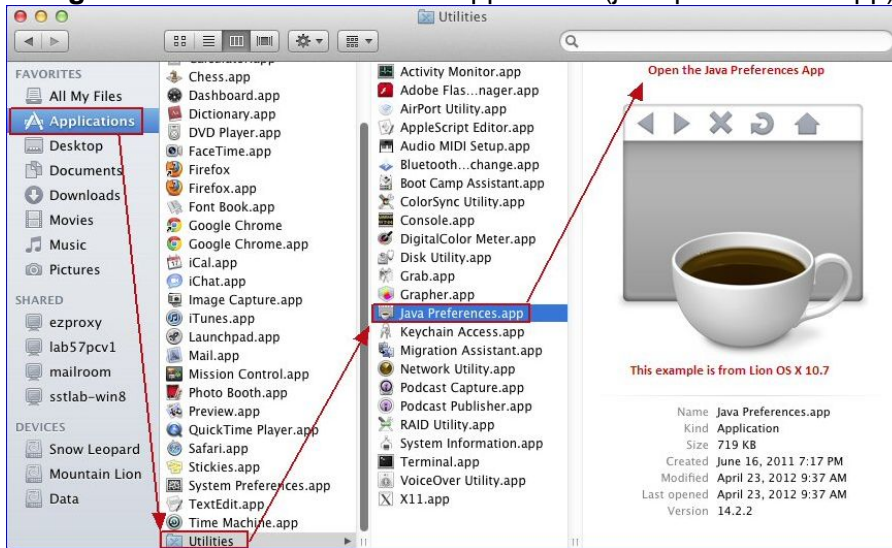
- <http://javatester.org/version.html>
- <http://www.java.com/en/download/testjava.jsp>

For additional information, visit <http://support.apple.com/kb/HT5268>.

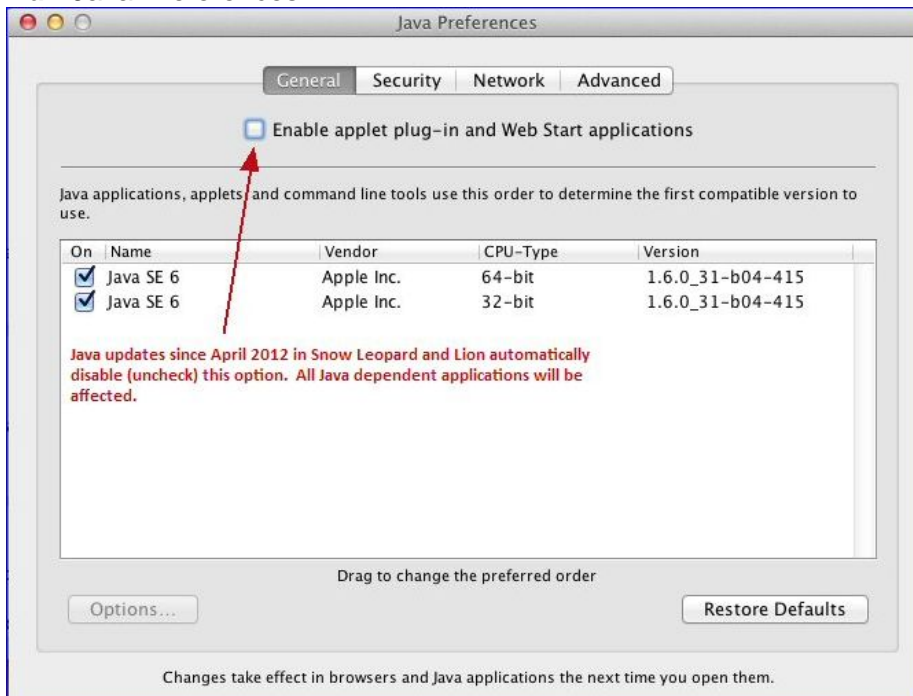
ENABLING JAVA APPLETS AFTER JAVA UPDATES

Since April 2012, installing newer versions of JRE using the Macintosh auto-update function disables Java applets for all Web browser and Web Start applications. Java applet functionality must be manually re-enabled.

1. Navigate to the Java Preferences application (java.preferences.app)



2. Run Java Preferences



3. **Click** the checkbox to re-enable Java applet plug-ins
4. **Close** Java Preferences
5. **Open** your Web browser and sign in to SciFinder

6. **Click Explore Substances** or **Explore Reactions**. The structure drawing thumbnail should be visible and functional (see Test Your Installation).
-

For additional assistance, contact your IT department or the CAS Customer Center (<http://www.cas.org/contact-us/cas-customer-center>).